



CAT D6T LGP Track Type Tractor

SAFETY & SECURITY

All the equipment is installed with the following additional equipment to enhance safe and secure use.

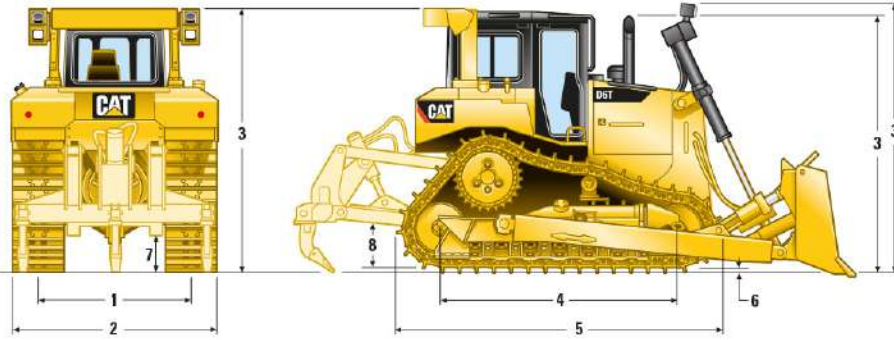
1. High Resolution reverse camera
2. Green Light Seat Belt Warning
3. Work at Height Fall protection rails
4. Accugrade Ready for GPS uses
5. Anti Vandal Guards
6. Unique Operator Keys
7. Anti Theft Satellite Tracking
8. On Board Diagnostic Data logging
9. Wireless Product Link Machine communication.

CAT D6T Track Type Tractor

Operating Weight
22,448 kg 49,489 lb

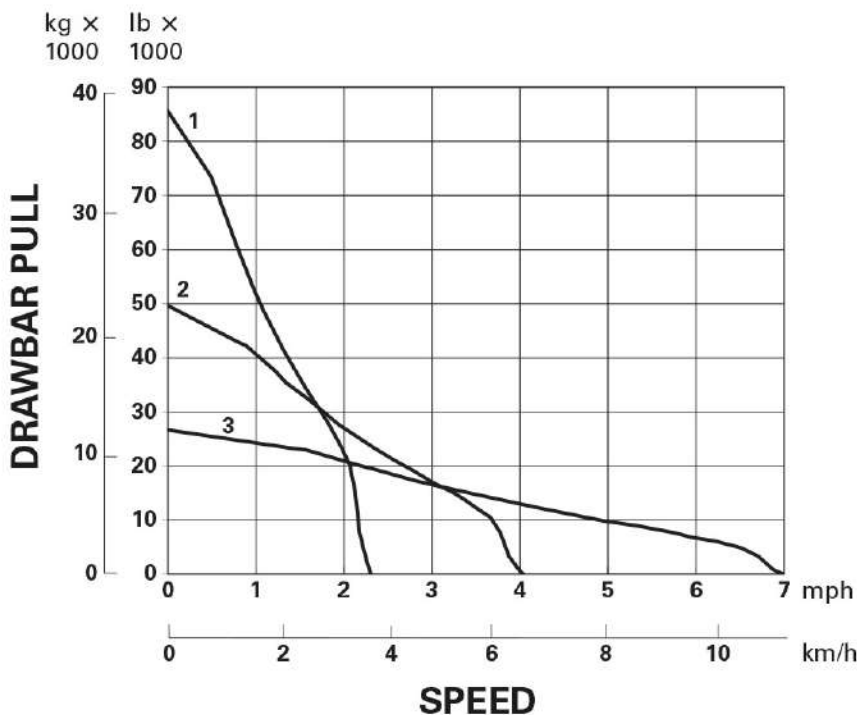


1. Dimensions All dimensions are approximate.



1 Track gauge	2286 mm
2 Width of tractor	
Over trunnions	—
Without trunnions (std. track)	3150 mm
3 Machine height from tip of grouser:	
Stack	3176 mm
ROPS	3219 mm
Premium Light Package	3360 mm
4 Length of track on ground	3250 mm
5 Length of basic tractor	4247 mm
With following attachments add:	
Drawbar	216 mm
Ripper Multi-Shank (tip at ground line)	1370 mm
Winch	397 mm
VPAT Blade	1412 mm
6 Height of grouser	65 mm
7 Ground clearance	434 mm
Track pitch	203 mm
Number of shoes per side	45
Number of rollers per side	8
Standard shoe	785 mm
Ground contact area (std. track)	5.10 m ²
Ground pressure*	42.8 kPa
8 Drawbar height	626 mm
From ground face of shoe	561 mm

2. Drawbar Pull



To discuss your production or rental requirements
in more detail call our rental team on 0161 761 5109

All data gathered from the manufacturer & accurate at time of publication. This data sheet is provided as a guide only. Please check against manufacturer data on all critical requirements.

3. Engine

Engine Model	C9.3 ACERT™
Emissions	Tier 4 Interim / EU Stage IIIB
Gross Power – SAE J1995	171 kW 229 hp
Engine Power – ISO 14396	169 kW 227 hp

4. Service Refill Capacities

Fuel Tank	425.0 L	93.0 gal
Cooling System	64.4 L	14.0 gal
Engine Crankcase	24.6 L	5.4 gal
Powertrain	148.0 L	32.5 gal
Final Drives (each)	13.5 L	3.0 gal
Roller Frames (each)	25.0 L	5.5 gal
Pivot Shaft Compartment	5.0 L	1.1 gal
Hydraulic Tank	65.5 L	14.5 gal

5. Blades

Capacity:

3.70 m³ 4.83 yd³

Width:

4040 mm 13.3 ft



General Purpose Dozing Tool

“s” - The straight blade provides excellent versatility. Since it is physically smaller than the SU or U blade, it is easier to maneuver and can handle a wider range of materials. It has a higher kW/meter (HP/foot) of cutting edge than the SU or U blade; consequently, the “S” is more aggressive in penetrating and obtaining a blade load. A tilt cylinder increases both the productivity and versatility of this dozer. With a high kW

MODEL

	S LGP	
Gauge	2.29m	90"
Type	Straight	
Blade Capacities*	3.79 m ³	4.96 yd ³
Weight, Shipping** (Dozer)	2720 kg	5997 lb
Tractor and Dozer Dimensions:		
A Length (Blade Straight)	5.50 m	18'1"
Blade Dimensions:		
B Width (including std. end bits)	3.26 m	10'8"
C Height	1411 mm	4'8"
D Max. Digging Depth	453 mm	1'6"
E Ground Clearance @ Full Lift	1204 mm	3'11"
G Max. Pitch Adjustment	+4.4° to -4.4°	
H Max. Hydraulic Tilt	747 mm	2'5"
J Hydraulic Tilt (Manual Brace Centered)	399 mm	1'4"
K Push Arm Trunnion Width (to Ball Centers)	3.42 m	11'5"

6. Ground Pressures

SHOE WIDTH	CONTACT AREA	GROUND PRESSURE
915 36	5.98 9275	37.52 5.44

7. Sound Performance

ISO6396

Operator Sound 79 dB(A)

ISO 6395

Spectator Sound 115 dB(A)

1. Dimensions
2. Drawbar Pull
3. Engine
4. Service Refill Capacities
5. Blades
6. Ground Pressures
7. Sound Performance