



CAT 352F Hydraulic Excavator

SAFETY & SECURITY

All the equipment is installed with the following additional equipment to enhance safe and secure use.

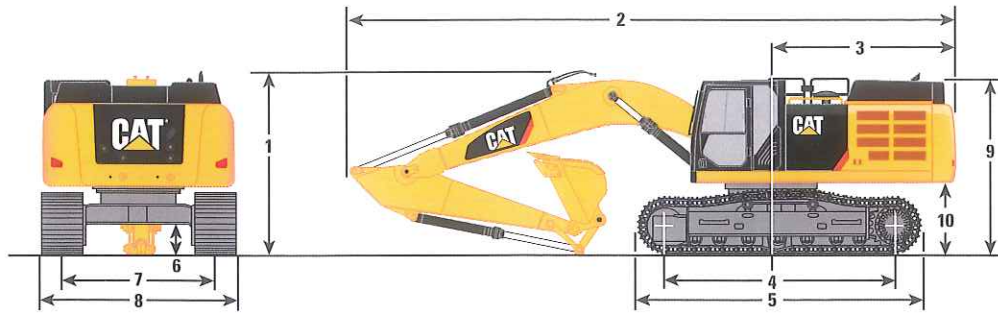
1. 360° All round view colour camera system
2. Green Light Seat Belt Warning
3. Work at Height Fall protection rails
4. Rated Load Capacity Indicator -Prolec PME200
5. Working Envelope Monitoring
6. Anti Vandal Guards
7. Unique Operator Keys
8. Anti Theft Satellite Tracking
9. Twin locking Hydraulic Quick Coupler
10. Wireless Product Link Machine communication
11. ROPS & FOPS Cab Protection
12. Demolition Screen Guards

CAT 352F Hydraulic Excavator

Weights
Maximum 53,500kg



1. Dimensions All dimensions are approximate.

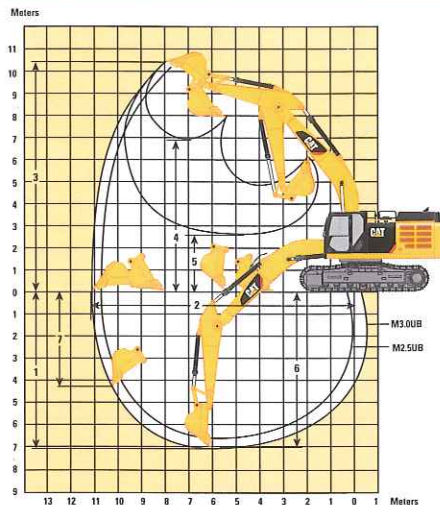


Boom Options	Mass Boom
	6.55 m
Stick Options	M2.5UB
1 Shipping Height (boom height)	4040 mm
Shipping Height (handrail height)	3520 mm
2 Shipping Length	11 700 mm
3 Tail Swing Radius	3730 mm
4 Length to Center of Rollers	4340 mm
5 Track Length	5350 mm
6 Ground Clearance**	710 mm
Ground Clearance*	740 mm
7 Track Gauge (Expanded)	
600 mm, 750 mm, 900 mm Shoes	2890 mm
Track Gauge (Retracted)	
600 mm, 750 mm Shoes	2390 mm
900 mm Shoes	2640 mm

8 Transport Width (Expanded)	
600 mm Shoes	3680 mm
750 mm Shoes	3680 mm
900 mm Shoes	3790 mm
Transport Width (Retracted)	
600 mm Shoes	3180 mm
750 mm Shoes	3180 mm
900 mm Shoes	3540 mm
9 Cab Height	3370 mm
Cab Height with Top Guard	3520 mm
10 Counterweight Clearance**	1430 mm
Bucket Type	SD
Bucket Capacity	3.2 m ³
Bucket Tip Radius	2121 mm

*Including shoe lug height.
**Without shoe lug height.
Dimensions may vary depending on bucket selection.

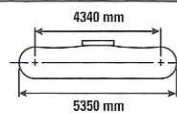
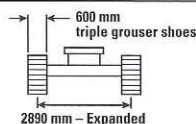
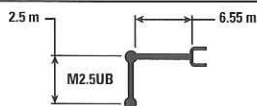
2. Working Ranges All dimensions are approximate.



Boom Options	Mass Boom
	6.55 m
Stick Options	M2.5UB
1 Maximum Digging Depth	6650 mm
2 Maximum Reach at Ground Level	10 770 mm
3 Maximum Cutting Height	10 250 mm
4 Maximum Loading Height	6700 mm
5 Minimum Loading Height	3230 mm
6 Maximum Depth Cut for 2440 mm Level Bottom	6490 mm
7 Maximum Vertical Wall Digging Depth	3850 mm
Bucket Type	SD
Bucket Capacity	3.2 m ³
Bucket Tip Radius	2121 mm

Dimensions may vary depending on bucket selection.

3. Mass Boom Lift Capacities (Counterweight: 9.0 mt – without Bucket – Heavy Lift: On)



Reach	3000 mm		4500 mm		6000 mm		7500 mm		mm			
	kg	kg	kg	kg	kg	kg	kg	kg	kg	kg		
7500 mm					*15 400	*15 400	*13 850	11 700	*12 700	10 300	8110	
6000 mm					*17 350	15 900	*14 600	11 350	*12 900	9100	8640	
4500 mm			*23 150	*23 150	*19 400	15 050	*15 600	10 950	12 900	8500	8890	
3000 mm					*20 750	14 450	*16 350	10 600	12 750	8350	8870	
1500 mm					*20 950	14 150	16 150	10 350	13 250	8650	8600	
0 mm			*25 200	21 700	*25 800	21 800	*20 000	14 100	*15 600	10 350	*14 150	9500
-1500 mm	*19 650	*19 650	*25 200	21 800	*25 800	21 800	*20 000	14 100	*15 600	10 350	*14 150	9500
-3000 mm	*27 200	*27 200	*22 300	22 150	*17 450	14 300			*13 950	11 400	7090	

4. Sound Performance

Exterior – ISO 6395* 106 dB(A)

Operator – SAE J1166/ISO 6396 69 dB(A)

* As per European Union Directive 2000/14/EC as amended by 2005/88/EC.

5. Service Refill Capacities

Fuel Tank Capacity	720 L
Cooling System	50 L
Engine Oil (with filter)	38 L
Swing Drive (each)	10 L
Final Drive (each)	15 L
Hydraulic System Oil (including tank)	570 L
Hydraulic Tank Oil	407 L
DEF Tank	41 L

6. Engine

Engine Model	Cat C13 ACERT
Power – SAE J1995	322 kW – 432 hp (438 PS)
Power – ISO 14396	317 kW – 425 hp (431 PS)
Power – ISO 9249	304 kW – 408 hp (413 PS)
Bore	130 mm
Stroke	157 mm
Displacement	12.5 L

7. Bucket & Stick Forces

Boom Options	Mass Boom
	6.55 m
Stick Options	M2.5UB
UB Linkage	3.2 m ³
Heavy Duty	
Bucket Digging Force (ISO)	296 kN
Stick Digging Force (ISO)	241 kN
Severe Duty	
Bucket Digging Force (ISO)	290 kN
Stick Digging Force (ISO)	239 kN

8. Ground Bearing Pressures

	750 mm Triple Grouser Shoes
M6.55 m	52 600 kg 73 kPa

To discuss your production or rental requirements in more detail call our rental team on 0161 761 5109

All data gathered from the manufacturer & accurate at time of publication. This data sheet is provided as a guide only. Please check against manufacturer data on all critical requirements.

1. Dimensions
2. Working Ranges
3. Reach Boom Lift Capacities
4. Sound Performance
5. Service Refill Capacities
6. Engine
7. Bucket & Stick Forces
8. Ground Bearing Pressures