



# CAT D10R Dozer

## SAFETY & SECURITY

All the equipment is installed with the following additional equipment to enhance safe and secure use.

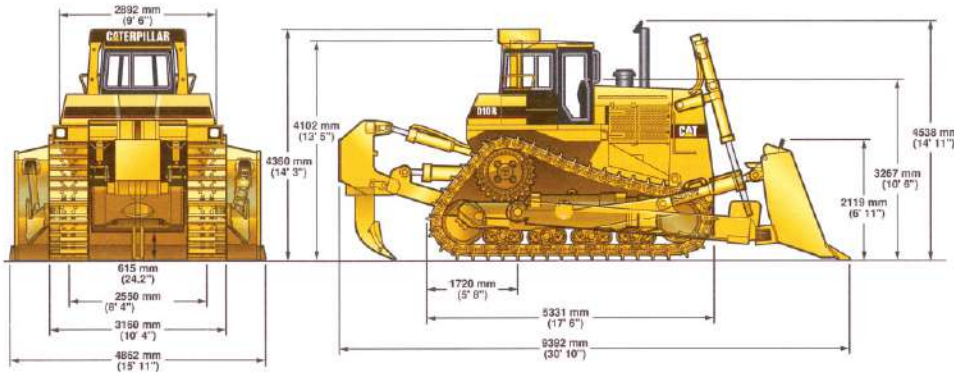
1. High Resolution reverse camera
2. Green Light Seat Belt Warning
3. Work at Height Fall protection rails
4. Anti Vandal Guards
5. Unique Operator Keys
6. Anti Theft Satellite Tracking
7. On Board Diagnostic Data logging
8. Wireless Product Link Machine communication.

# CAT D10R Track Type Tractor

Operating Weight  
65,395 kg 144,169 lb



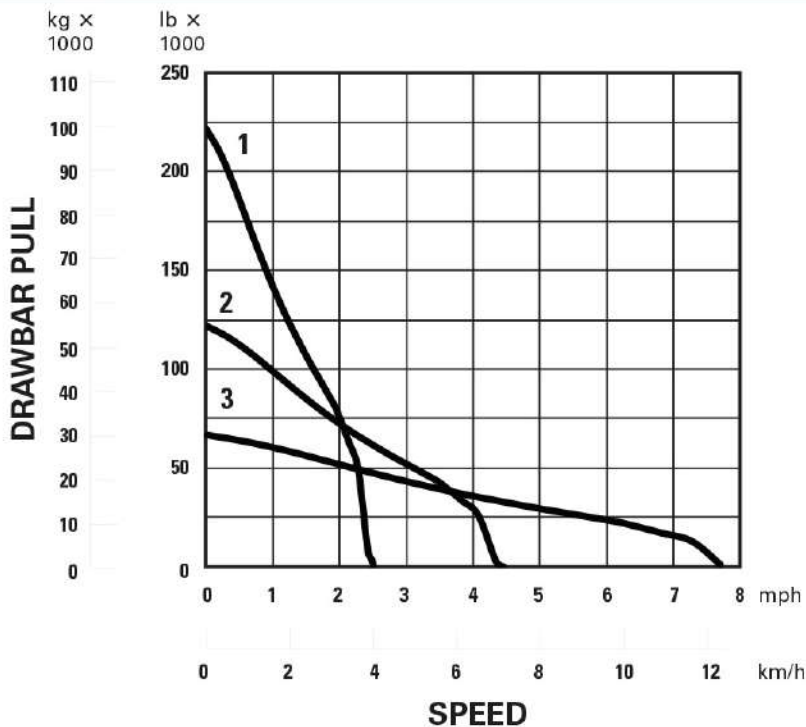
## 1. Dimensions All dimensions are approximate.



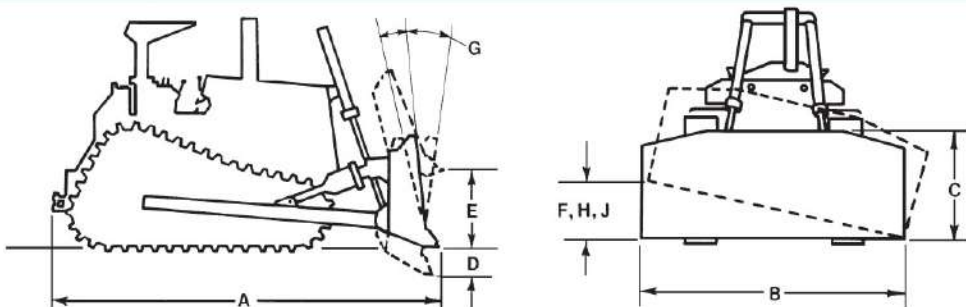
With attachments add to overall machine length:

Single Shank Ripper	1892 mm	6'2.5"
Multi Shank Ripper	1717 mm	5'7.6"
10 SU Dozer	2169 mm	7'1.4"
10 U Dozer	2423 mm	7'11.4"
Width over trunnions	3716 mm	12'2.0"
Drawbar Height (Centreline of clevis) from Ground Face of Shoe	779 mm	30.7"
<b>ENGINE DIMENSIONS</b>		
Bore	137 mm	5.4"
Stroke	152 mm	6.0"
Displacement	27 litres	1649 cu in

## 2. Drawbar Pull



## 3. Blade Angles



## 4. Engine

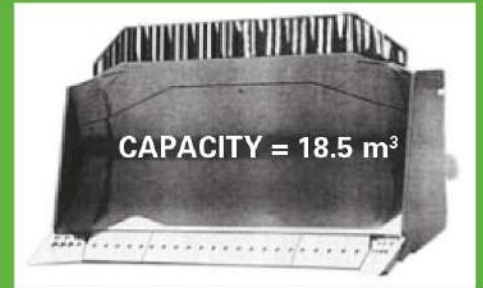
Engine Model	V12 3412E turbocharged	
Ratings at 1900 rpm		
Gross Power	457 kW	613 hp
Flywheel Power	425 kW	570 hp

## 5. Service Refill Capacities

Fuel Tank	1109 L	244 gal
Cooling System	132 L	29 gal
Engine Crankcase	60 L	13.1 gal
Powertrain	189 L	41.5 gal
Final Drives (each)	23 L	5.0 gal
Roller Frames (each)	90 L	19.7 gal
Pivot Shaft Compartment	30.3 L	6.6 gal
Hydraulic Tank	108 L	23.7 gal

## 6. Blades

Capacity:	18.5 m <sup>3</sup>	24.2 yd <sup>3</sup>
Width:	4862 mm	15.11 ft
Height:	2119 mm	6.11 ft
Digging Depth:	674 mm	26.5 ft
Ground Clearance:	1497 mm	4.11 ft
Maximum Tilt:	993 mm	3.3 ft
Weight:	10,251 kg	22,600 lb
Total Operating Weight:	65,395 kg	144,169 lb



### Semi Universal Dozing Tool

"SU" — The Semi-U blade combines the desirable characteristics of S and U-blades into one package. It has increased capacity by the addition of short wings which include only the dozer end bits. The wings provide improved load retention capabilities while maintaining the blade's ability to penetrate and load quickly in tightly packed materials and to handle a wide variety of materials in production oriented applications. Tilt cylinder(s) increase both the productivity and versatility of this dozer. Equipped with a push plate, it is effectively used for push loading scrapers.

## 7. Ground Pressures

SHOE WIDTH	CONTACT AREA	GROUND PRESSURE
710mm	5.50m <sup>2</sup>	17psi

## 8. Sound Performance

ISO6394	
Operator Sound	84 dB(A)

1. Dimensions
2. Drawbar Pull
3. Blade Angles
4. Engine
5. Service Refill Capacities
6. Blades
7. Ground Pressures
8. Sound Performance

1.3e CAT D10R Dozer

To discuss your production or rental requirements  
in more detail call our rental team on 0161 761 5109

All data gathered from the manufacturer & accurate at time of publication. This data sheet is provided as a guide only. Please check against manufacturer data on all critical requirements.