



# CAT 374F Hydraulic Excavator

## Key Features

All the equipment is installed with the following additional equipment to enhance safe and secure use.

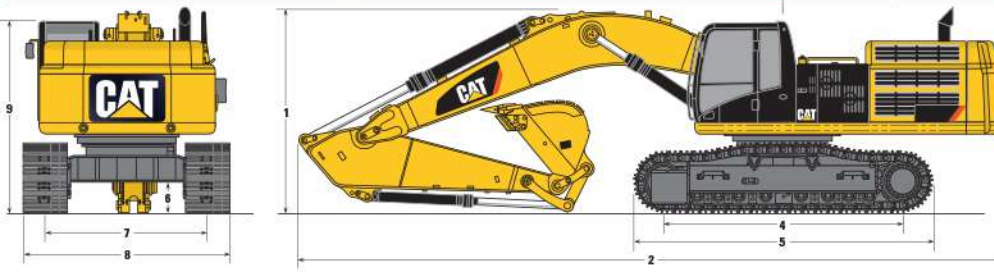
1. High Resolution reverse camera
2. Green Light Seat Belt Warning
3. Work at Height Fall protection rails
4. Rated Load Capacity Indicator -Prolec PME200
5. Working Envelope Monitoring
6. Anti Vandal Guards
7. Unique Operator Keys
8. Anti Theft Satellite Tracking
9. On Board Diagnostic Data logging
10. Wireless Product Link Machine communication.

# CAT 374F Hydraulic Excavator

Weights  
Maximum 75,170kg

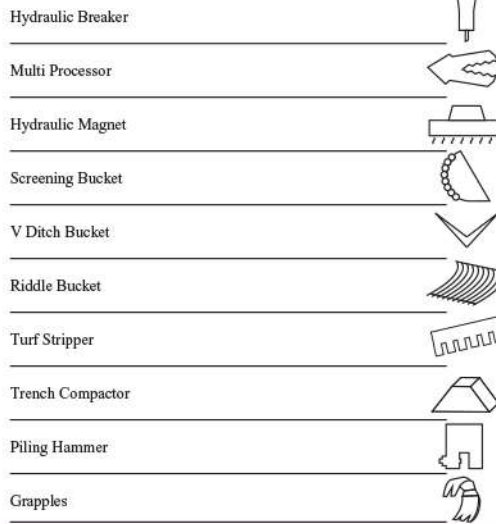


## 1. Dimensions All dimensions are approximate.

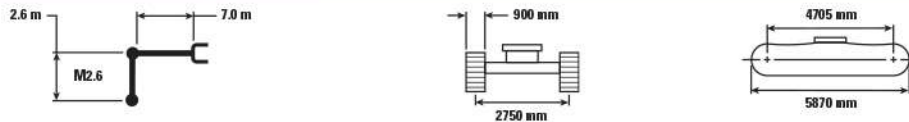


Boom Options	Mass Boom 7.0 m
<b>Stick Options</b>	<b>M3.00 m</b>
1 Height – with boom/stick installed	4720 mm
2 Guardrail Height	3970 mm
3 Counterweight Clearance	1540 mm
4 Ground Clearance	840 mm
5 Length – with boom/stick installed	12 620 mm
6 Track Length	5870 mm
7 Length to Center of Rollers	4705 mm
8 Tail Swing Radius	4015 mm
9 Track Gauge – retracted	2750 mm
Track Gauge – extended	3410 mm
10 Undercarriage Width – without steps	
750 mm Shoes	4160 mm
Undercarriage Width – including steps	
750 mm Shoes	4340 mm
11 Upperframe Width – without walkways	3450 mm
12 Upperframe Width – with walkways	4510 mm
13 Walkway Width (each)	530 mm

## Attachments

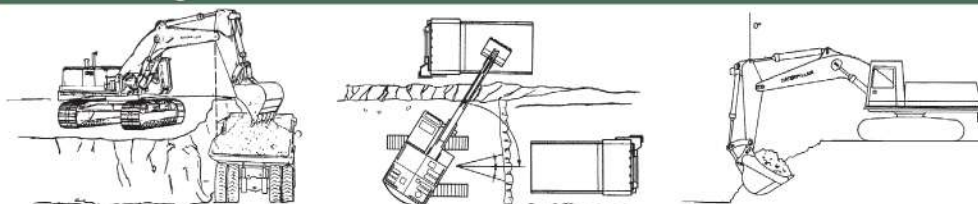


## 2. Mass Boom Lift Capacities



Stick Length	3.0 m		4.5 m		6.0 m		7.5 m		9.0 m		mm
	kg	kg	kg	kg	kg	kg	kg	kg	kg	kg	
9.0 m											6820
7.5 m											8010
6.0 m											8770
4.5 m											9230
3.0 m											9430
1.5 m											9380
0.0 m											9080
-1.5 m											8510
-3.0 m											7590
-4.5 m											6180

## 3. Maximising Production



**A. Optimise Bench height      B. Reduce swing angle to 35°      C. Optimum Stick dig angle**

**To discuss your production or rental requirements in more detail call our rental team on 0161 761 5109**

All data gathered from the manufacturer & accurate at time of publication. This data sheet is provided as a guide only. Please check against manufacturer data on all critical requirements.

## 4. Sound Performance

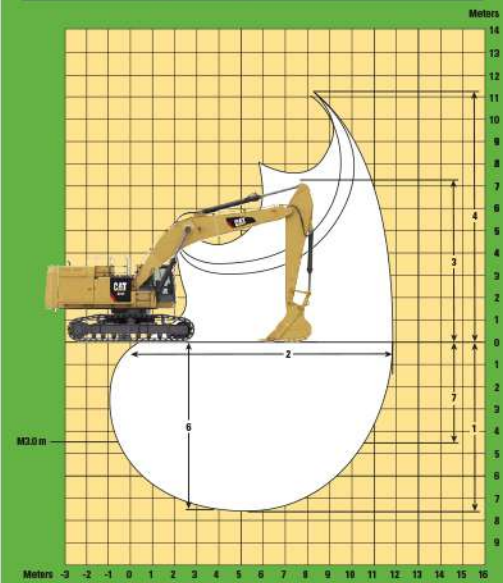
Exterior Sound Power Level – 72 dB(A)\*  
ISO 6395:2008

Operator Sound Pressure Level – 108 dB(A)  
ISO 6396:2008

## 5. Service Refill Capacities

Fuel Tank Capacity	935 L
Cooling System	74 L
Engine Oil (with filter)	60 L
Swing Drive (each)	12 L
Final Drive (each)	22 L
Hydraulic System Oil Capacity (including tank)	729 L
Hydraulic Tank Oil	612 L
DEF Tank	48 L

## 6. Working Ranges



Stick Options	Mass Boom 7.0 m	
	M3.0 m	M2.57 m
1 Max Digging Depth	7640 mm	7220 mm
2 Max Reach at Ground Line	11 850 mm	11 450 mm
3 Max Loading Height	7240 mm	7080 mm
4 Max Cutting Height	11 180 mm	11 010 mm
5 Min Loading Height	3070 mm	3490 mm
6 Max Depth Cut (2240mm Level Bottom)	7500 mm	7060 mm
7 Max Vert Wall Dig Depth	4510 mm	4140 mm
Bucket Digging Force (ISO)	411.8 kN	411.3 kN
Stick Digging Force (ISO)	323.2 kN	353.1 kN
Bucket Type	SDV	SDV
Bucket Capacity	4.6 m <sup>3</sup>	4.6 m <sup>3</sup>
Bucket Tip Radius	2000 mm	2000 mm

1. Dimensions
2. Mass Boom Lift Capacities
3. Maximising Production
4. Sound Performance
5. Service Refill Capacities
6. Working Ranges